

F-Series

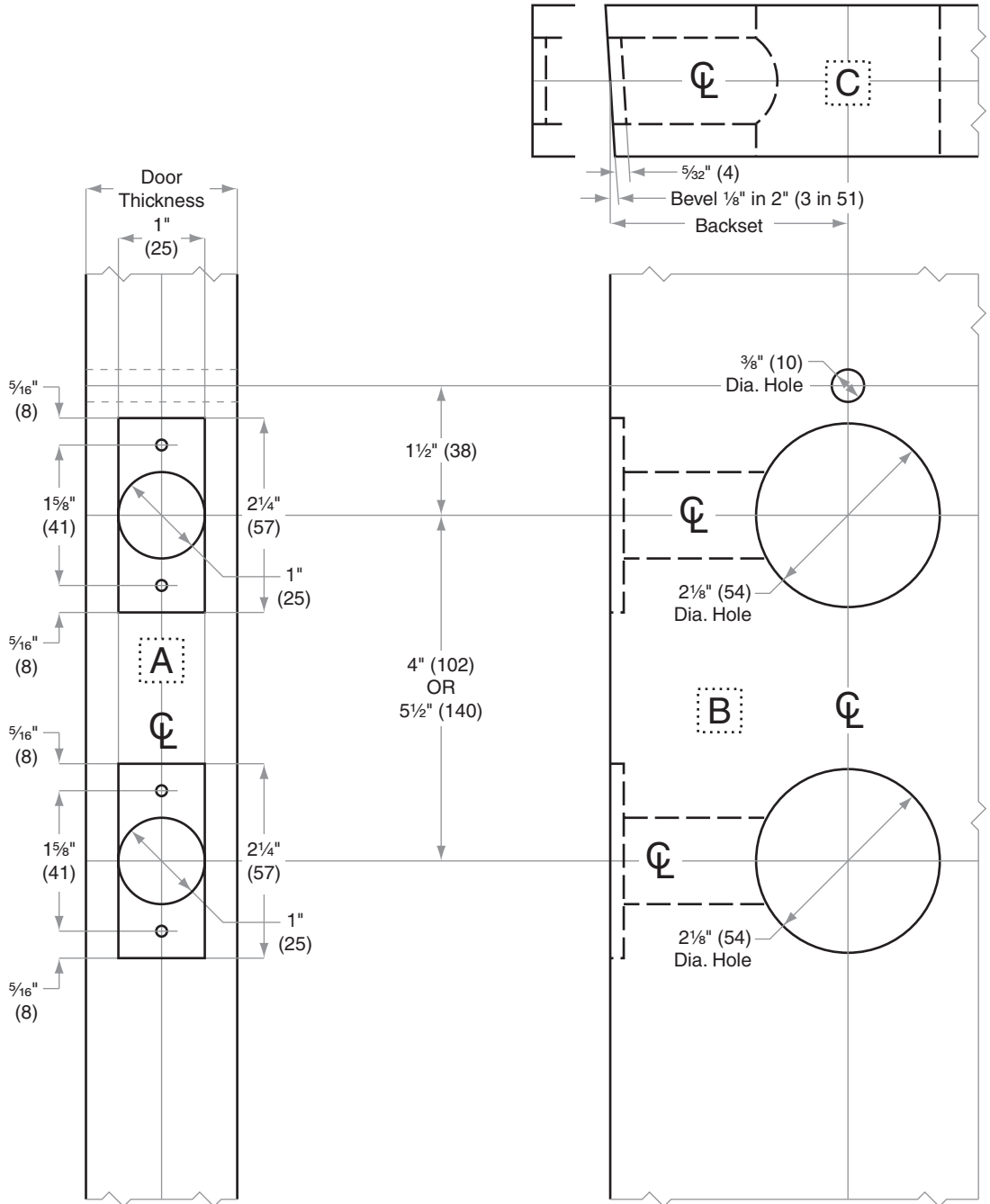
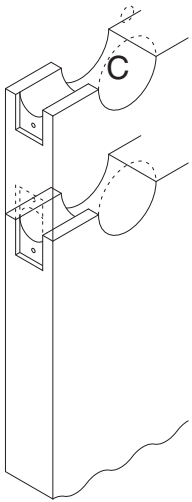
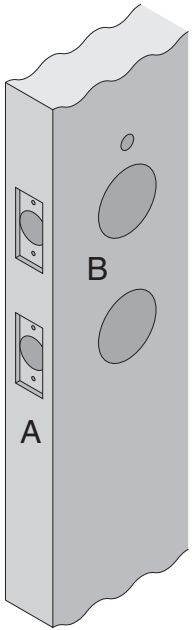
FE210F

Door Type: Wood or Composite, Flat or Beveled

Door Thickness: 1 $\frac{3}{8}$ " (41 mm)– 1 $\frac{3}{4}$ " (44 mm)

Faceplate: Square Corner, 1" (25 mm) wide

Backsets: F790-C, 2 $\frac{3}{8}$ " (60 mm) | F790-D, 2 $\frac{3}{4}$ " (70 mm)



Dimensions shown in parentheses () are in millimeters

Template is not to scale.

Job: _____

Date: _____

Door Thickness: _____

Remarks: _____

TEMPLATE

F790

F-Series

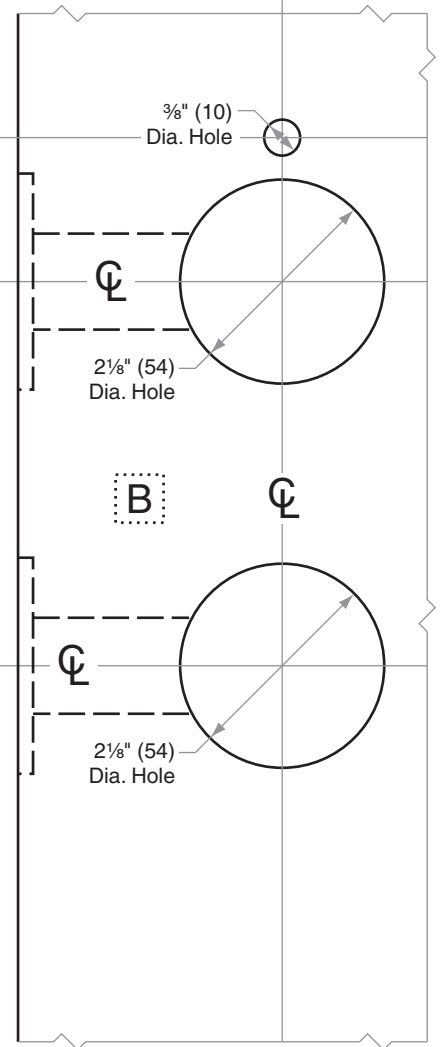
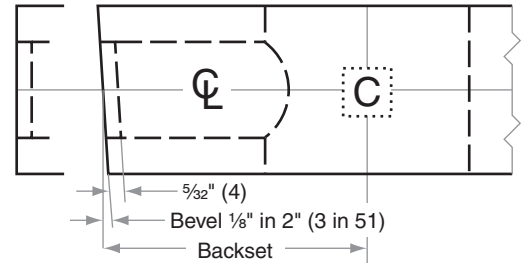
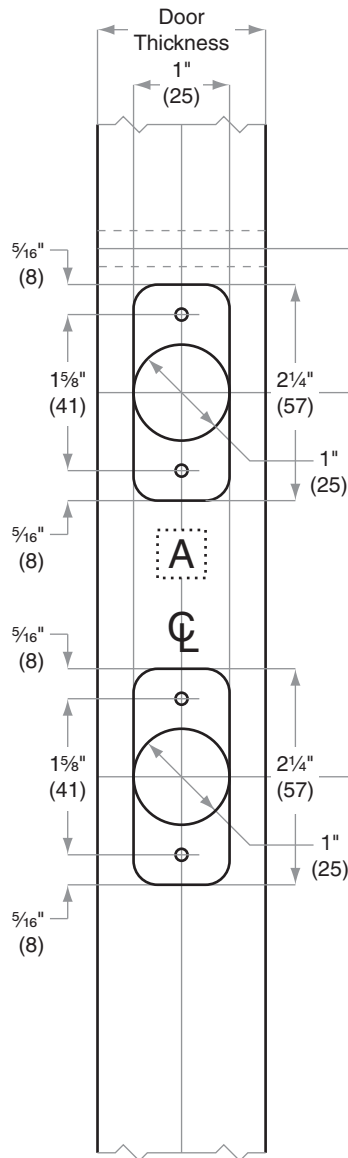
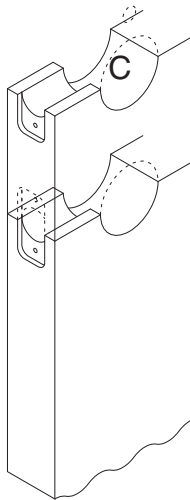
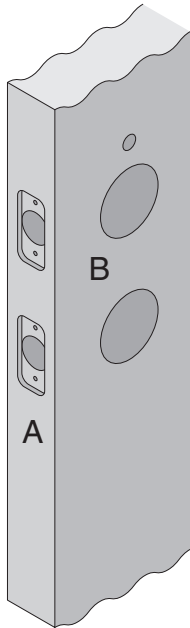
FE210F

Door Type: Wood or Composite, Flat or Beveled

Door Thickness: 1 $\frac{3}{8}$ " (41 mm)– 1 $\frac{3}{4}$ " (44 mm)

Faceplate: Round Corner, $\frac{1}{4}$ " (6 mm) Radius, 1" (25 mm) wide

Backsets: F791-C, 2 $\frac{3}{8}$ " (60 mm) | F791-D, 2 $\frac{3}{4}$ " (70 mm)



Dimensions shown in parentheses () are in millimeters

Template is not to scale.

Job: _____

TEMPLATE

Date: _____

Door Thickness: _____

F791

Remarks: _____

F-Series

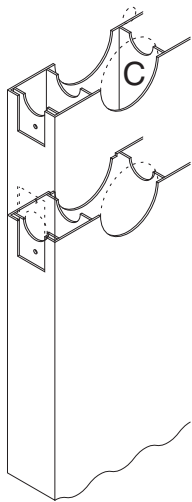
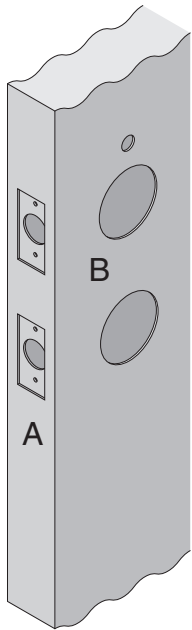
FE210F

Door Type: Metal, Flat or Beveled

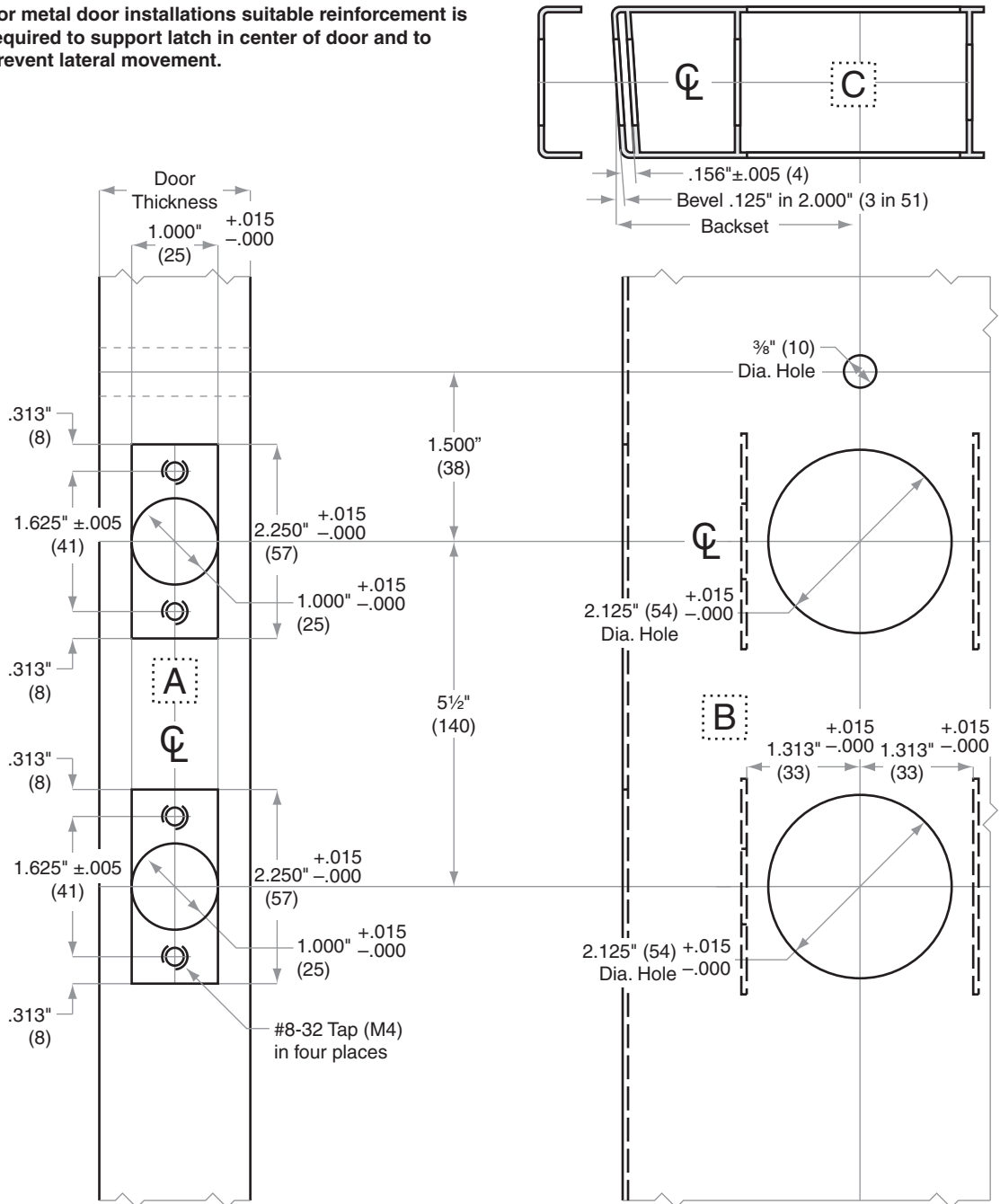
Door Thickness: 1 $\frac{3}{8}$ " (41 mm)– 1 $\frac{3}{4}$ " (44 mm)

Faceplate: Square Corner, 1" (25 mm) wide

Backsets: F792-C, 2 $\frac{3}{8}$ " (60 mm) | F792-D, 2 $\frac{3}{4}$ " (70 mm)



For metal door installations suitable reinforcement is required to support latch in center of door and to prevent lateral movement.



Dimensions shown in parentheses () are in millimeters

Template is not to scale.

Job: _____

TEMPLATE

Date: _____

Door Thickness: _____

F792

Remarks: _____