

CS-Series

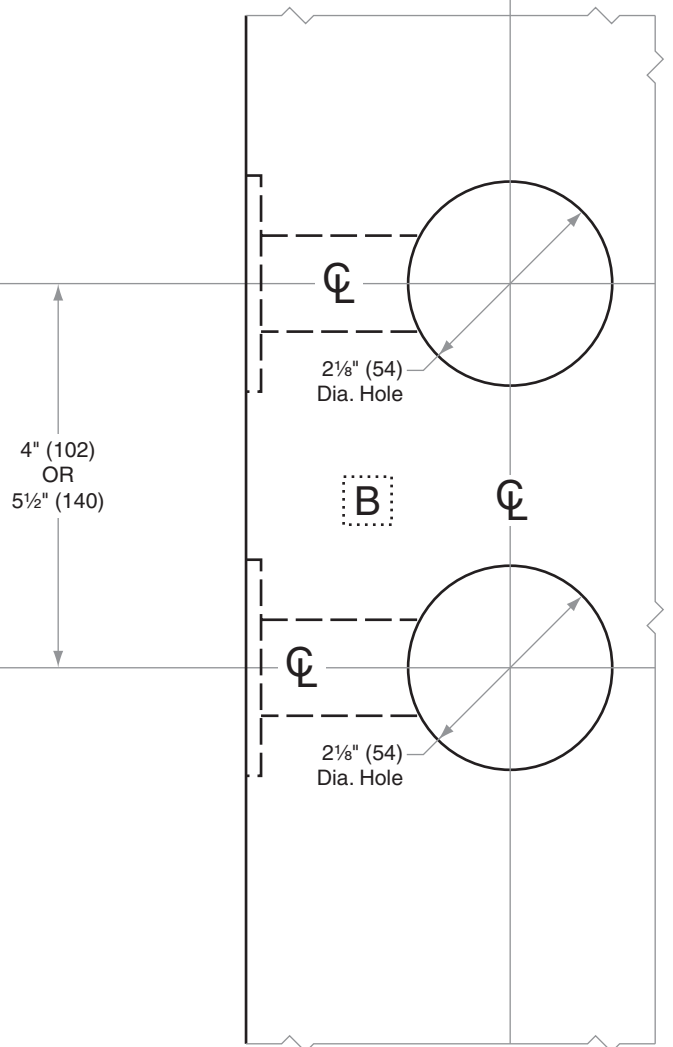
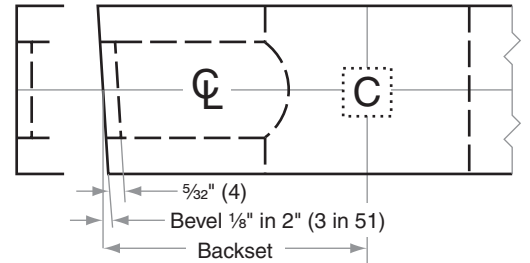
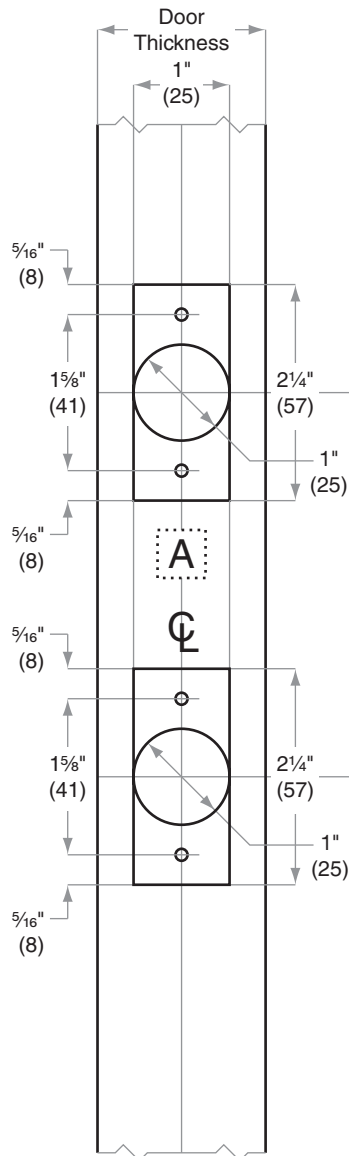
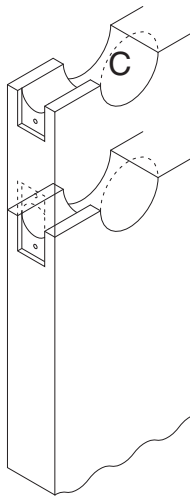
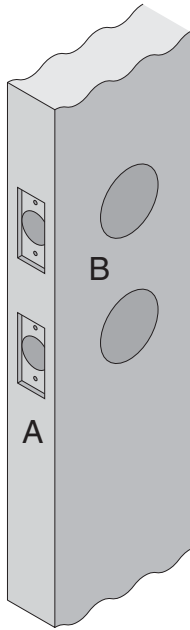
CS210

Door Type: Wood or Composite, Flat or Beveled

Door Thickness: 1 3/4" (44 mm)– 2" (51 mm)

Faceplate: Square Corner, 1" (25 mm) wide

Backsets: 2 3/4" (70 mm)



Dimensions shown in parentheses () are in millimeters

Template is not to scale.

Job: _____

TEMPLATE

Date: _____

Door Thickness: _____

CS101

Remarks: _____

