



# Latch and Strike Options

*Order Your Dexter Product to Match Any Door Prep*

While every Dexter product ships with a latch and strike to work in most applications, we help make installation at the jobsite even easier with the ability to choose the exact combination to match your specific door prep. If our standard latch and strike combinations are not exactly what you need, just choose from the latch and strike options on the reverse side.



*J10 Corona 609*



*J10 Seville 619*



*J10 Torino 716*



*J10 Solstice\* 619*  
*\* Coming in April 2010*



*J54 Stratus 716*



*J40 LaSalle 605*



*J40 Byron 605*



*J54 Marin 619*



*JH58 Barcelona 619*



*J54 Dublin 619*



*J54 Dover 609*



*JH58 Paris 716*

## Latch Options



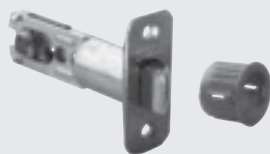
### Box Pack Dead Latch

Description: Triple Option Dead Latch  
 Part Number: 16-229  
 Size: 1" x 2-1/4"

Staked Round Corner – also includes square corner and drive-in faceplates

Application – J54 Keyed Entry

UL Rated Available – 16-061



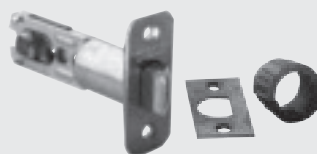
### Box Pack Spring Latch

Description: Dual Option Spring Latch  
 Part Number: 16-066  
 Size: 1" x 2-1/4"

Staked Round Corner – also includes drive-in faceplates

Application – J10 Passage and J40 Privacy

UL Rated Available – 16-059



### Box Pack Spring Latch

Description: Triple Option Spring Latch  
 Part Number: 16-070  
 Size: 1" x 2-1/4"

Staked Round Corner – also includes square corner and drive-in faceplates

Application – Only for handlesets JH60 and JH59

UL Rated Available – 16-059



### Box Pack Deadbolt Latch

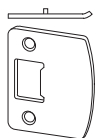
Description: Triple Option Deadbolt Latch  
 Part Number: 16-068  
 Size: 1" x 2-1/4"

Staked Round Corner – also includes square corner and drive-in faceplates

Application – JD60, JD80, JD81, JH59, and JH60 Deadbolts

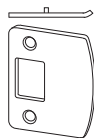
UL Rated Available – 16-063

## Strike Options



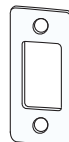
### Radius Full Lip Strike

Part Number: 10-101  
 (internal part number J250-009)  
 Size: 2-1/4" x 1-5/8"  
 Application: J54 Keyed Entry, J40 Privacy and J10 Passage Knobs and Levers



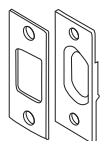
### Radius Deadbolt Full Lip Strike

Part Number: 10-102  
 (internal part number J250-010)  
 Size: 2-1/4" x 1-5/8"  
 Application: JD60, JD80, JD81, JH59 and JH60 Deadbolts



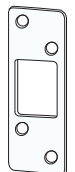
### Radius Deadbolt Strike

Part Number: 10-103  
 (internal part number J250-026)  
 Size: 1-1/8" x 2-1/4"  
 Application: JD60, JD80, JD81, JH59 and JH60 Deadbolts  
 Same size as Kwikset strike. Strike frame reinforcer not required.



### Square Deadbolt Strike

Part Number: 10-099  
 (internal part number J250-003)  
 Size: 2-3/4" x 1-1/8"  
 Application: JD60, JD80 and JD81 Deadbolts  
 Same size as Schlage strike. Includes strike frame reinforcer.



### Four-Hole Radius Deadbolt Strike

Part Number: 10-104  
 (internal part number J250-027)  
 Size: 1-1/4" x 3-5/8"  
 Application: JD60, JD80 and JD81 Deadbolts

**Note:** 630 finish strikes and latches used for all 619, 620, 625 and 630 finishes

## Standard Box Pack Configurations

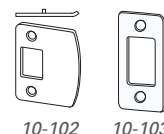
Function	Standard Latch	Standard Strike
J10	16-066	10-101
J40	16-066	10-101
J54	16-229	10-101
JD60	16-068	10-267
JH59	16-069	10-268

### Notes:

#### Box Pack Deadbolts

- Include Dual Strikes – One Radius Deadbolt Full Lip Strike (10-102) and One Radius Deadbolt Strike (10-103)
- Part Number 10-267
- Application – JD60, JD80, and JD81 Deadbolts

10-267



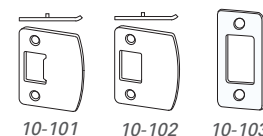
10-102

10-103

#### Box Pack Grip Handlesets

- Include Triple Strikes – One Radius Full Lip Strike (10-101); One Radius Deadbolt Full Lip Strike (10-102) and One Radius Deadbolt Strike (10-103)
- Part Number 10-268
- Handlesets ship with Triple Option Latches – One Triple Option Spring Latch (16-070) and One Triple Option Deadbolt Latch (16-068)
- Part Number 16-069
- Application – JH60 & JH59 Grip Handlesets

10-268



10-101

10-102

10-103

## Standard Visual Pack Configurations

Function	Standard Latch	Standard Strike
J10	16-066	10-101
J40	16-066	10-101
J54	16-229	10-101
JD60/JD62	16-068	10-103
JH60	16-069	10-101 & 10-103

16-069



16-070

16-068

