



Real Security Sets You Free.™

Keypad Locks

Cylinder Removal and Re-Keying Kit

Schlage Keypad Locks come standard with a 5-pin solid brass C-keyway cylinder. The re-keying steps are the same as for the Schlage B-300 series deadbolt. Cylinder removal and replacement instructions are illustrated on the back page. A supplemental kit has been designed with replacement parts for the Keypad Locks and Deadbolts.



Supplemental Re-Keying Kit

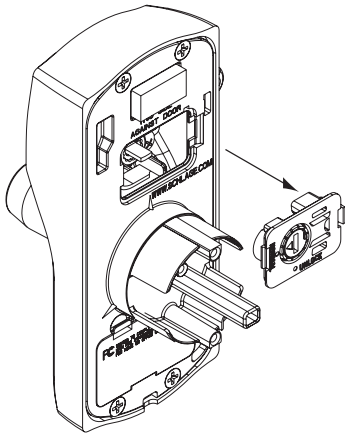
Part Number 38-030 Keypad Lock Re-Keying Kit

Part Number	Description	Kit Qty.	Reorder Qty.
F605-367	CYLINDER DRIVER BAR FOR KPL	10	100
B520-628	WASHER FOR KPD TAILPIECE	15	150
B520-607	SPACER FOR KPD TAILPIECE	15	150
B520-608	RETAINER FOR KPD TAILPIECE	25	250
F605-349	SCREW FOR ATTACHING OUTSIDE KPD ESCUTCHEON TO BASEPLATE	15	150
B520-606	CYLINDER DRIVER BAR FOR KPD	10	100

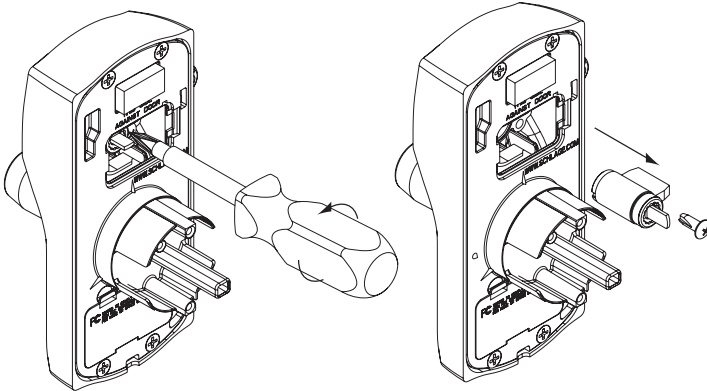


FE575 and FE595 Cylinder Removal Instructions

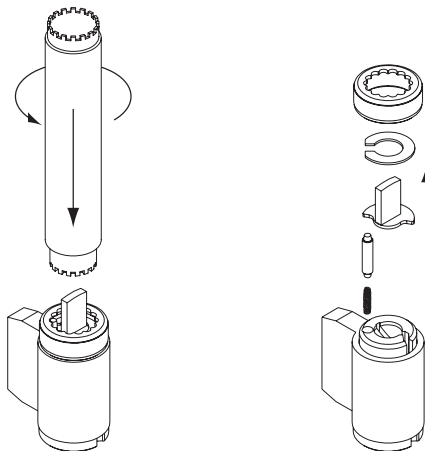
1 Remove Access Panel from Keypad Assembly



2 Remove Cylinder Retaining Screw and Cylinder

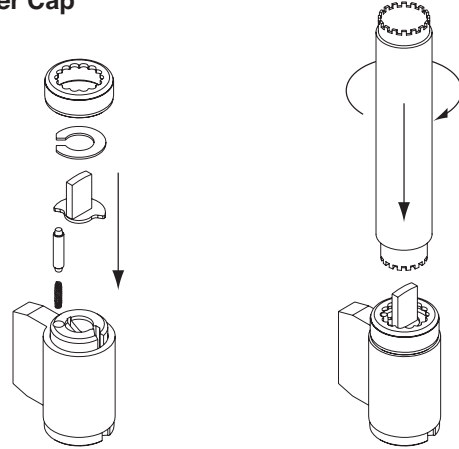


3 Remove Cylinder Cap, Washer, Tailpiece, Pin, and Spring



4 Rekey Cylinder as Usual

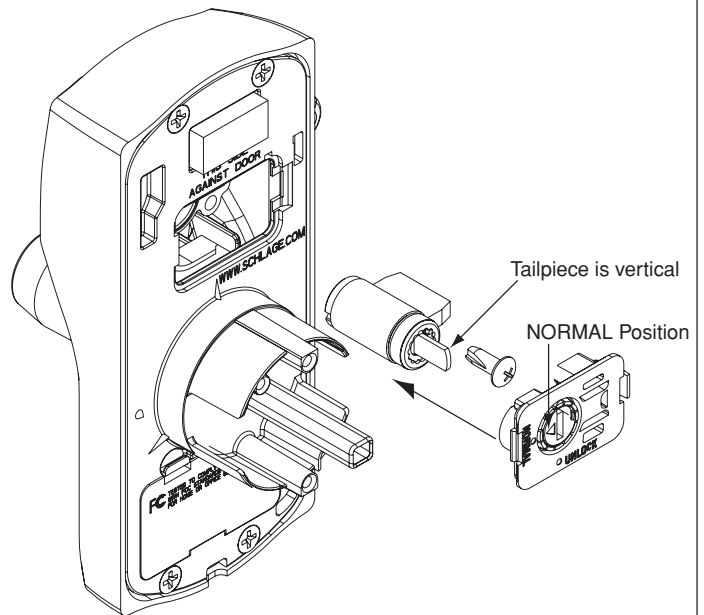
5 Install Spring, Pin, Tailpiece, Washer, and Cylinder Cap



NOTE: Tailpiece is available in the Schlage Supplemental Electronics Lock Rekeying Kit

6 Reinstall Cylinder as Shown

NOTE: Rotate tailpiece to vertical position as shown. Make sure arrow on access panel is pointing to NORMAL position.



7 Use FE575 or FE595 Installation Sheet to Install Lock.